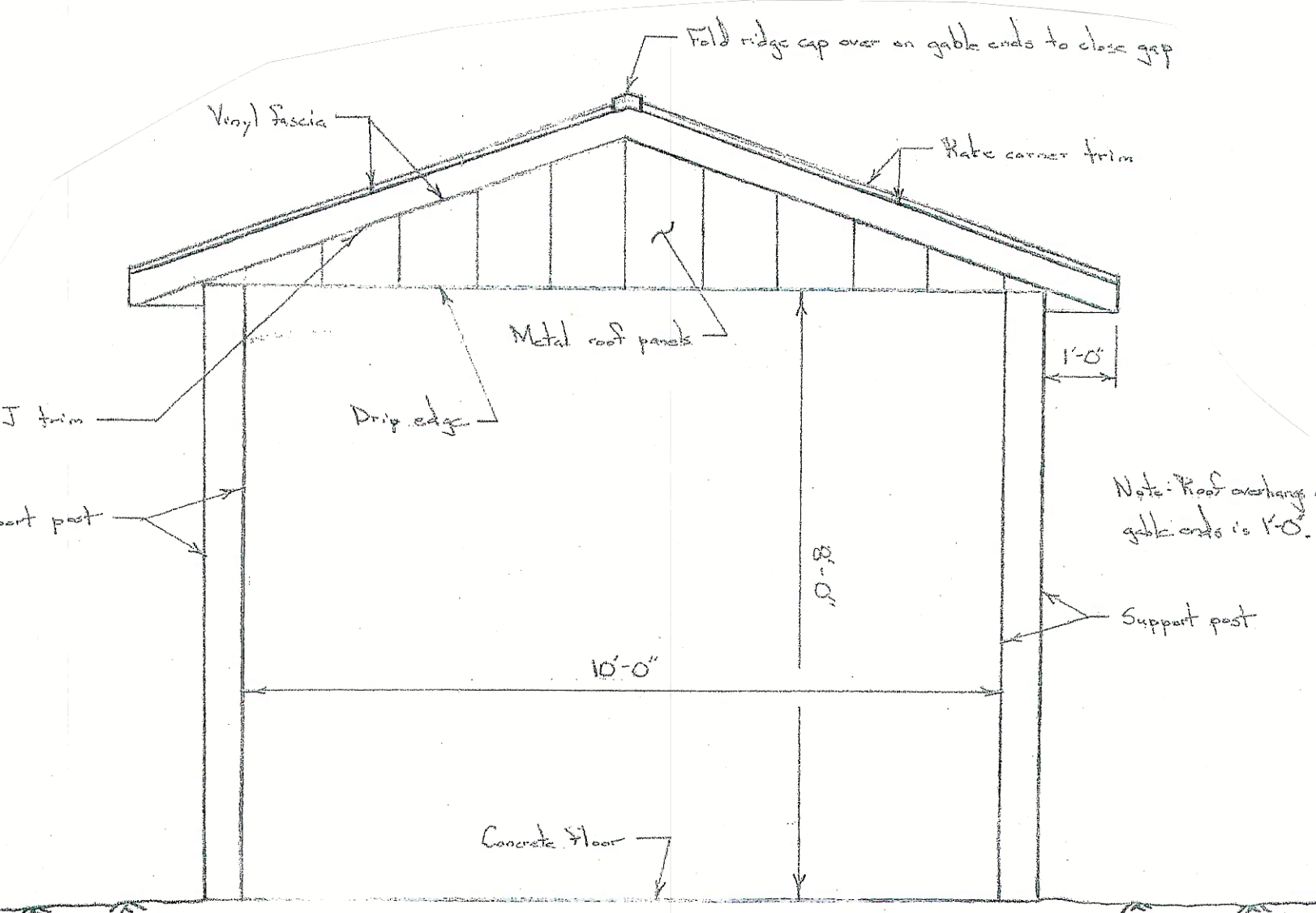


FASTENER SCHEDULE - SHOOTING STATION SHELTERS

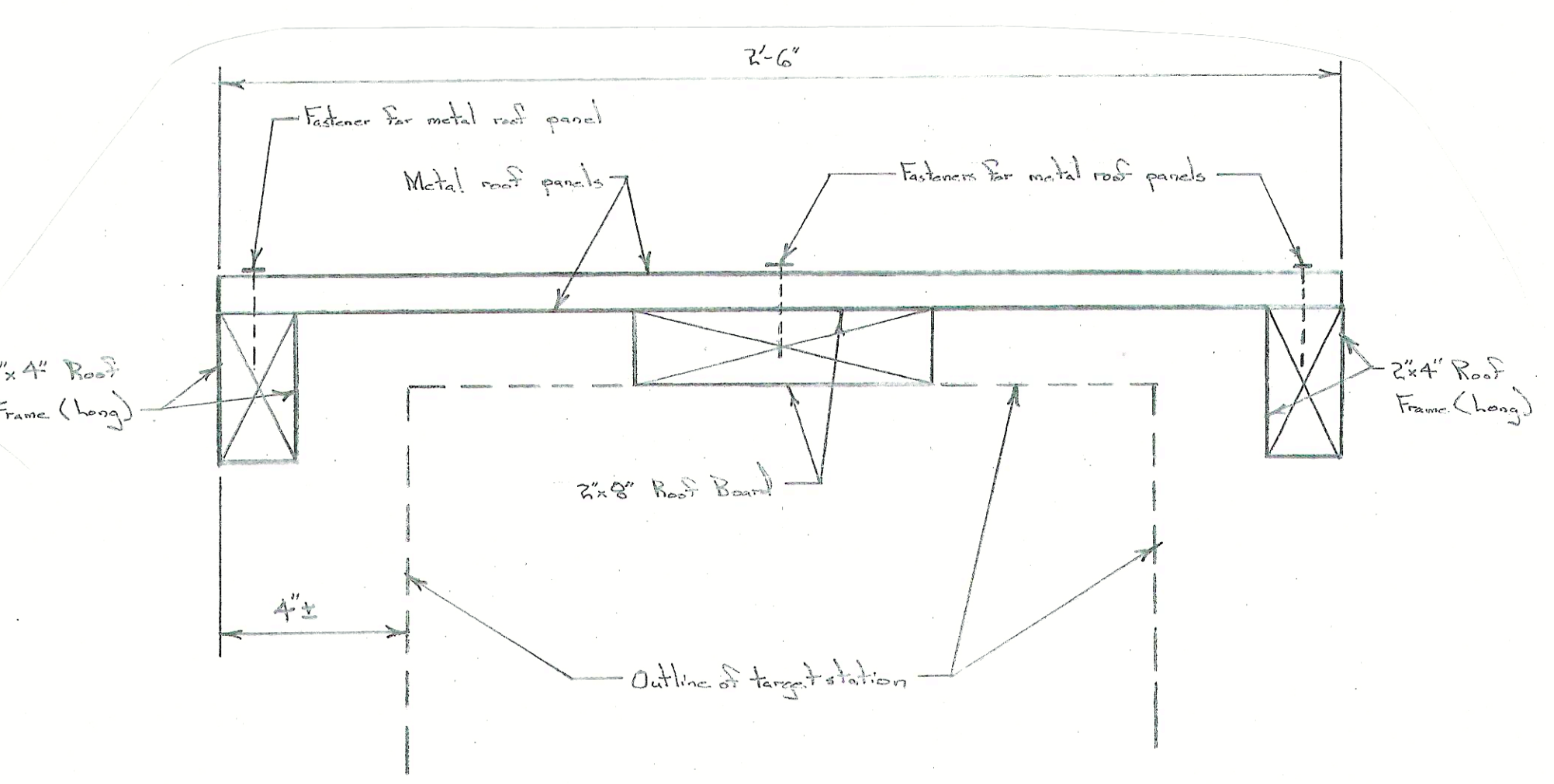
Connection	Fasteners
Truss Seats to Posts	Two 1/2" x 10" Carriage Bolts
Trusses to Truss Seats	Simpson Strong-Tie HIZ Hurricane Tie (Z-Max) with 8d nails
Furline to Trusses (Top Chord)	Two #10-3" Screws
Furline to Truss Seats	Two #10-3" Screws

* Trusses can also be connected to the truss seats with 2" x 6" scraps on both sides of the trusses and then set in between the truss seats. Use #10-3" screws for these connections.



SHOOTING STATION SHELTER END ELEVATION

Scale: 1/2 in. = 1 ft.

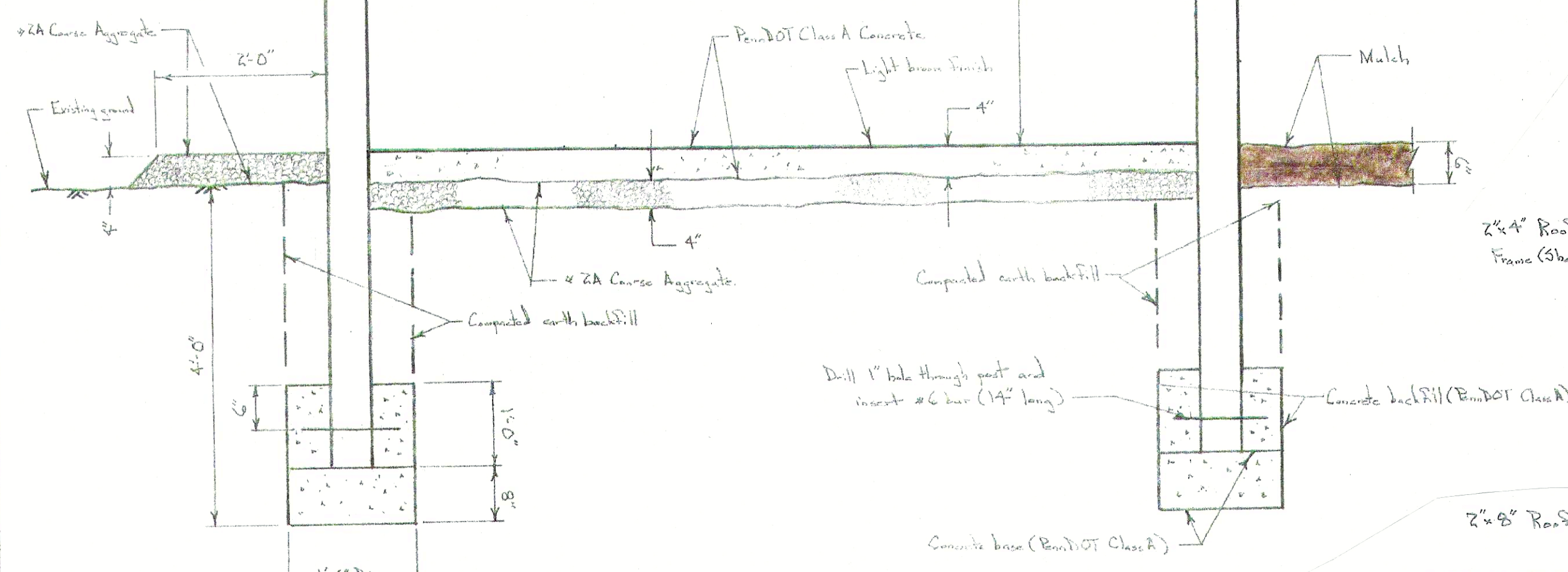


ROOF SECTION - TARGET STATION

Scale: 3 in. = 1 ft.

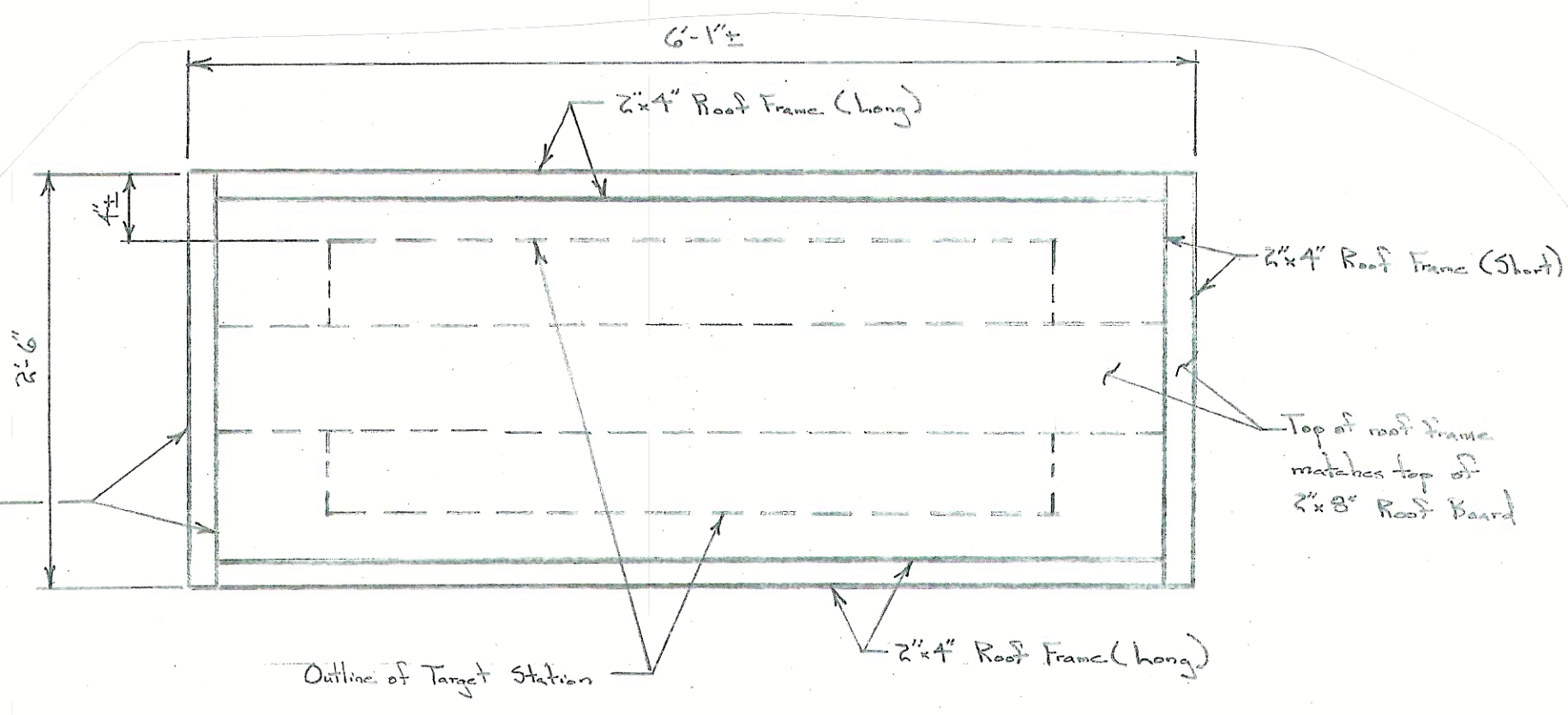
FASTENER SCHEDULE - TARGET STATIONS

Connection	Fasteners	Quantity	Remarks
Joists to Posts	3/4" x 14" Carriage Bolt w/nut & washer	2 (1 each end)	Through posts
Roof Board to Posts	#10, 3" Phillips Flat Head Deck Screw	8 (4 each end)	Top of posts
Target Floor Boards to Joists	#10, 3" Phillips Flat Head Deck Screw	4	2 per each joist
Target Wall Boards to Posts	#10, 3" Phillips Flat Head Deck Screw	4	2 rows of 2
Target Ceiling Boards to Roof Board	#10, 3" Phillips Flat Head Deck Screw	4	2 rows of 2
Front Frames to Target Boards	#10, 3" Phillips Flat Head Deck Screw	5	1 per target board
Roof Frames (Short) to Roof Boards & Posts	#10, 3" Phillips Flat Head Deck Screw	2	1 in roof board and 1 in post
Roof Frames (Short) to Roof Frames (Long)	#10, 3" Phillips Flat Head Deck Screw	4 (2 each end)	



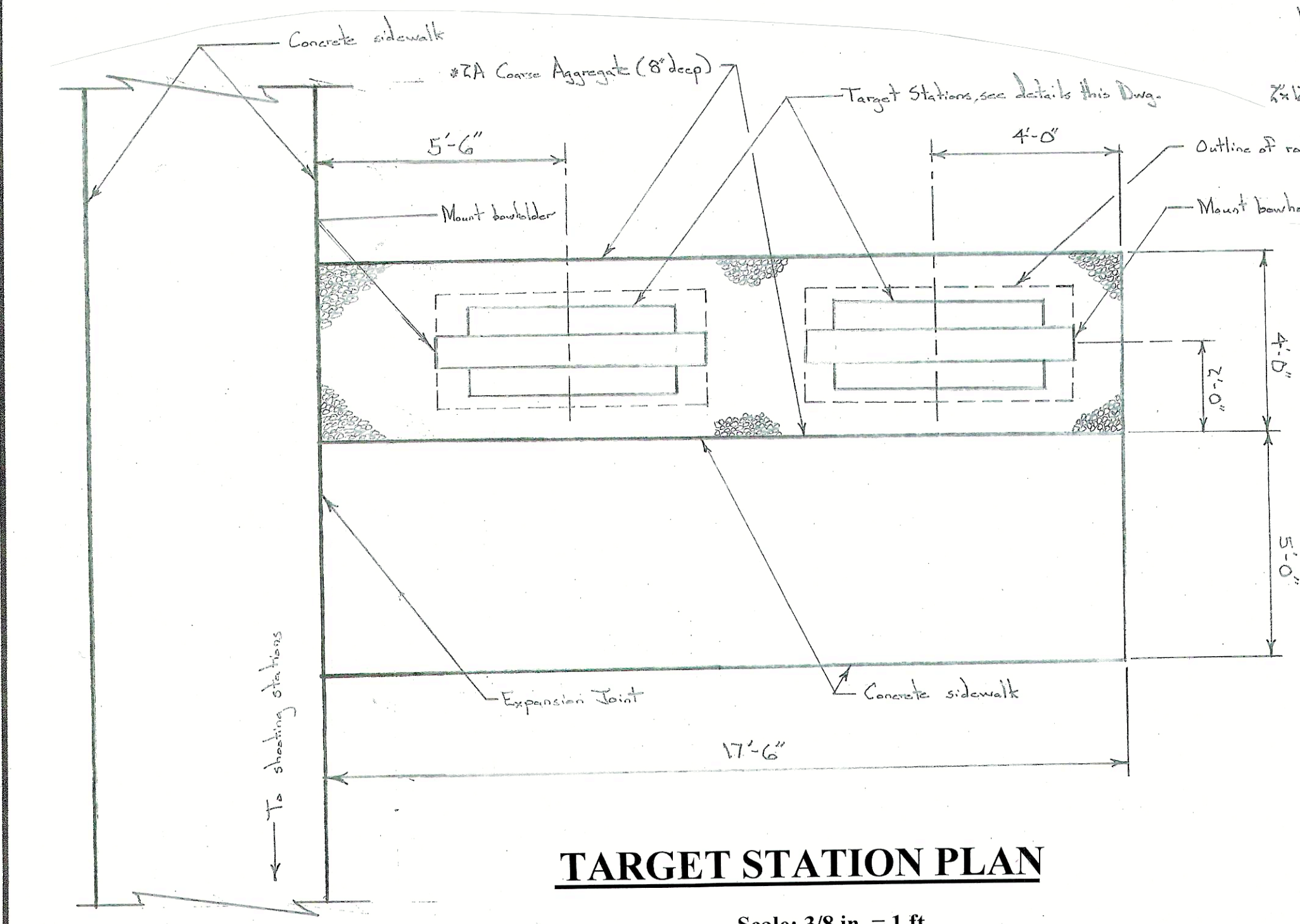
SHOOTING STATION SHELTER SECTION

Scale: 3/4 in. = 1 ft.



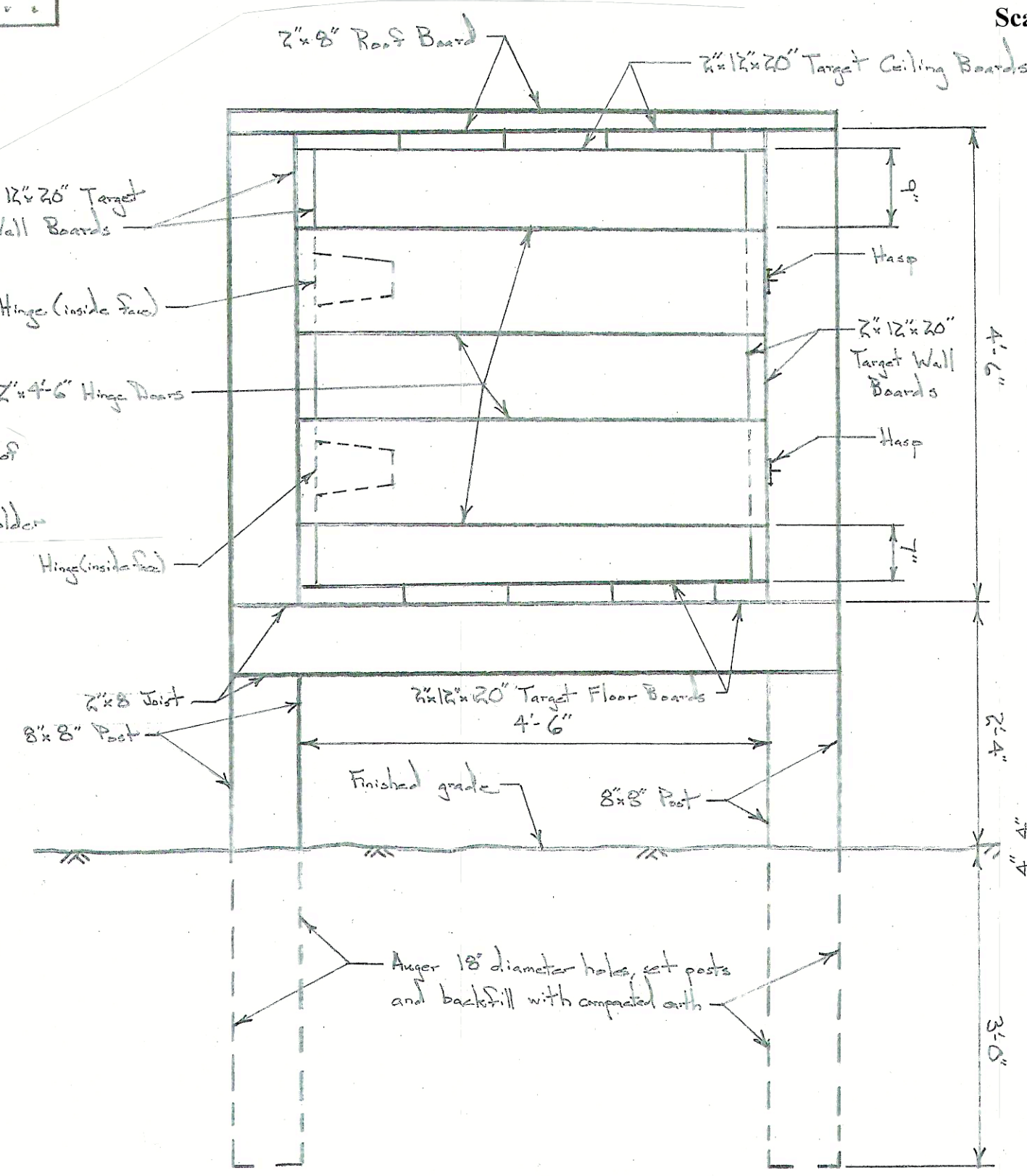
ROOF PLAN - TARGET STATION

Scale: 1 in. = 1 ft.



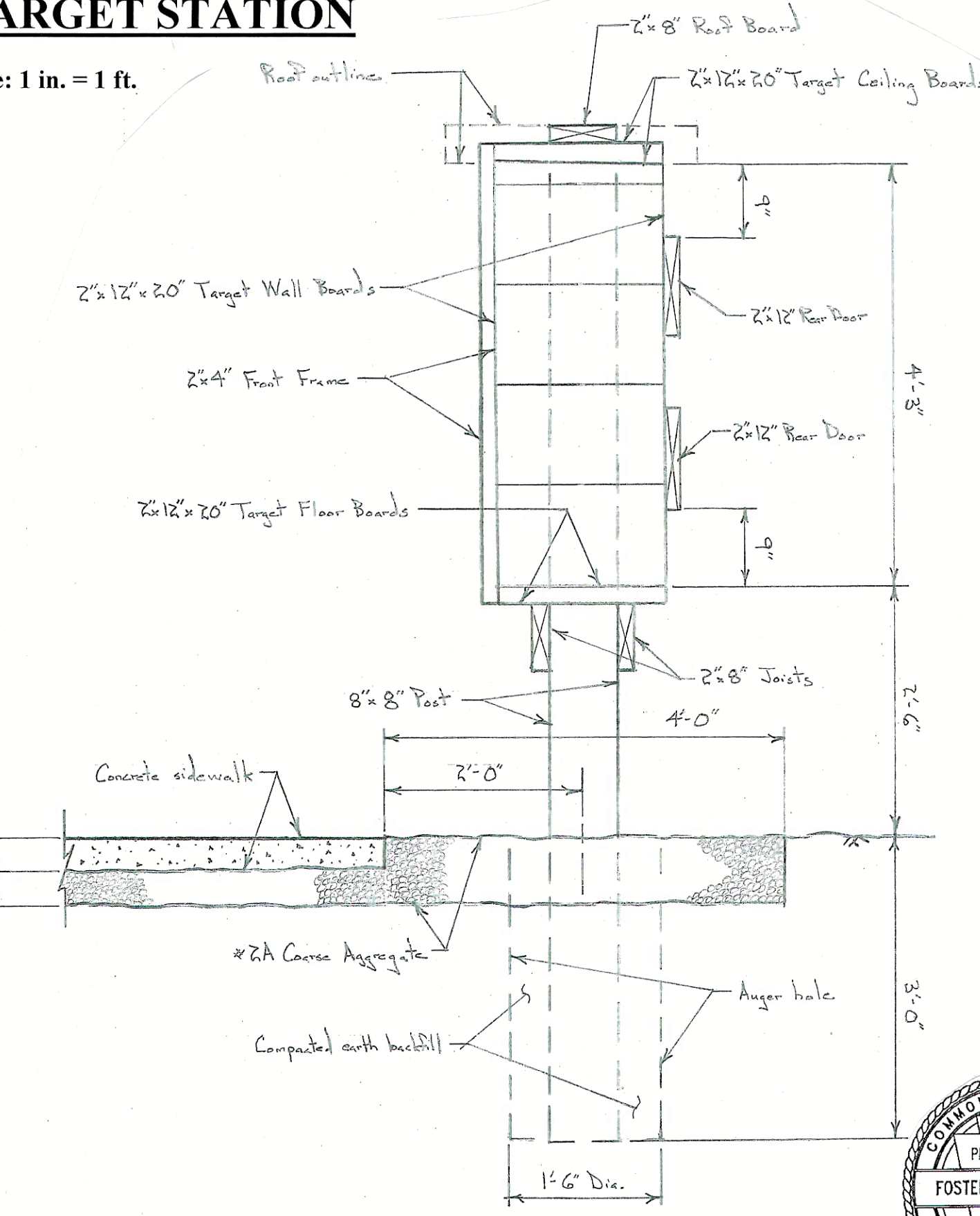
TARGET STATION PLAN

Scale: 3/8 in. = 1 ft.



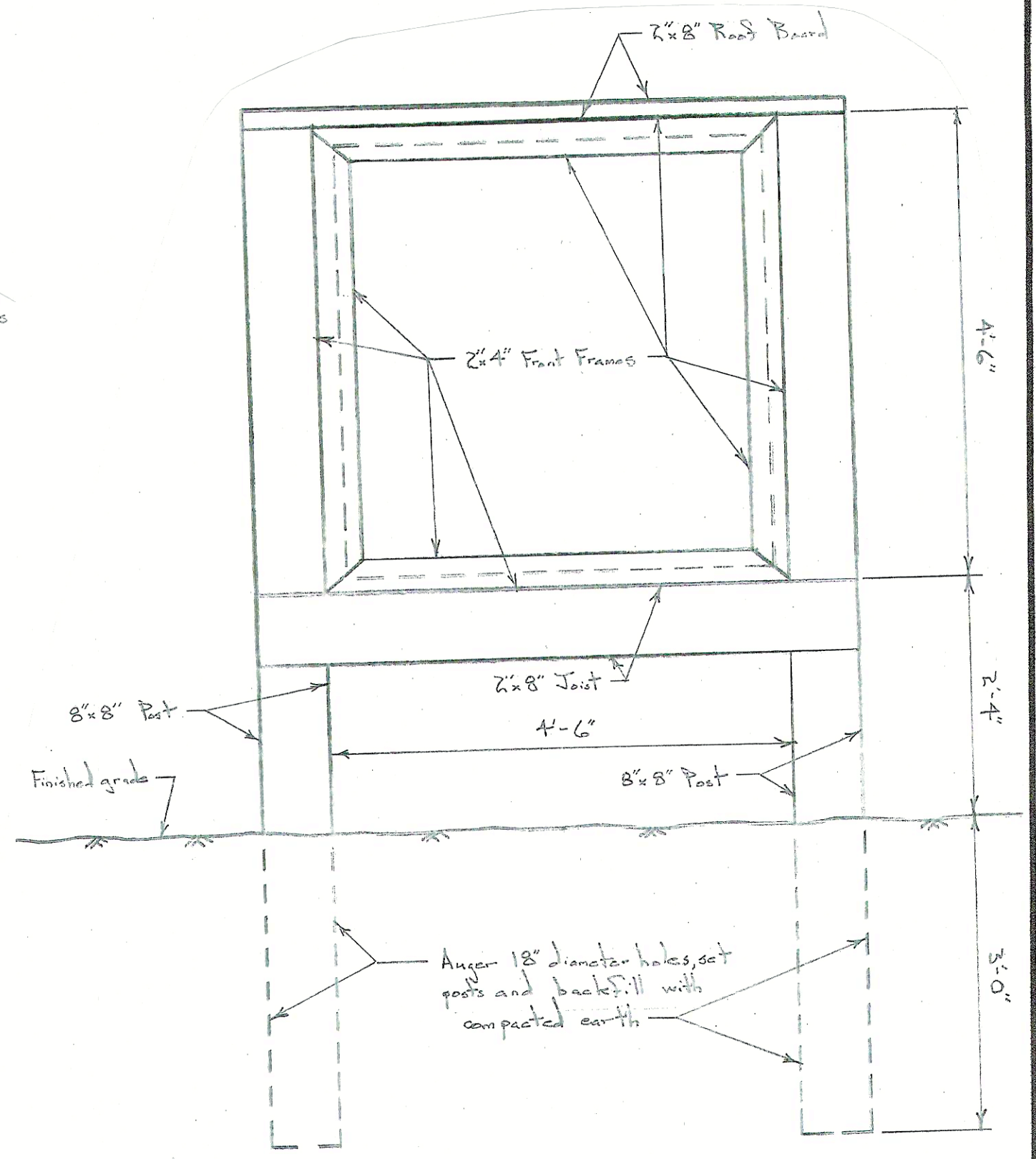
REAR ELEVATION - TARGET STATION

Scale: 3/4 in. = 1 ft.
Note: Roof not shown.



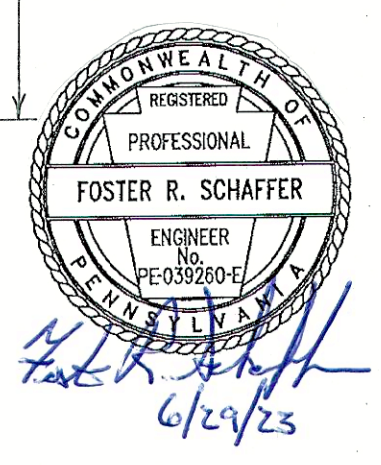
TARGET STATION SECTION

Scale: 3/4 in. = 1 ft.



FRONT ELEVATION - TARGET STATION

Scale: 3/4 in. = 1 ft.
Note: Roof not shown.



PENNSYLVANIA GAME COMMISSION		
SGL #180	SHOHOLA TWP.	PIKE CO. PA.
ARCHERY RANGE CONSTRUCTION PROJECT		
SHOOTING STATION SHELTER & TARGET STATION DETAILS		
REVISIONS	PROJECT NO.	PGC-180-23-01
▲	DRAWN BY:	FS
▲	DATE:	6/29/23
▲	SHEET NO.	4 OF 5